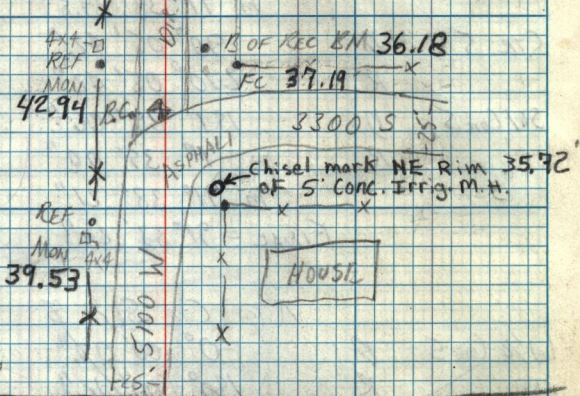


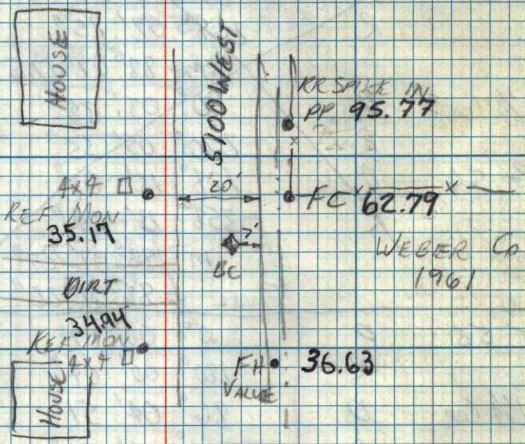
T @ NW COR SEC 5
 BS N 1/4 COR SEC 5
 FS W 1/4 COR

T @ NW COR SEC 5
 BS W 1/4 SEC 5
 X RT TO
 W.C. = $35^{\circ}02'21''$
 W.C. = $144^{\circ}00'05''$
 B OF REC = $223^{\circ}49'24''$

Weber Co Mon
 1980
 31/32
 6/5



6/5



115.72' PP
 T @ W 1/4 SEC 5
 BS SW COR SEC 5
 X RT TO
 W.C. = $45^{\circ}08'33''$
 W.C. = $135^{\circ}28'43''$
 FIRE HYDR. = $340^{\circ}13'42''$